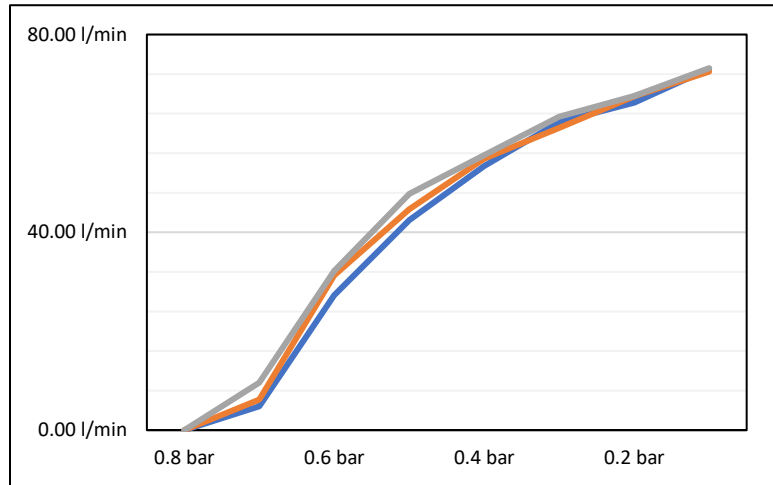


Flow Capacity

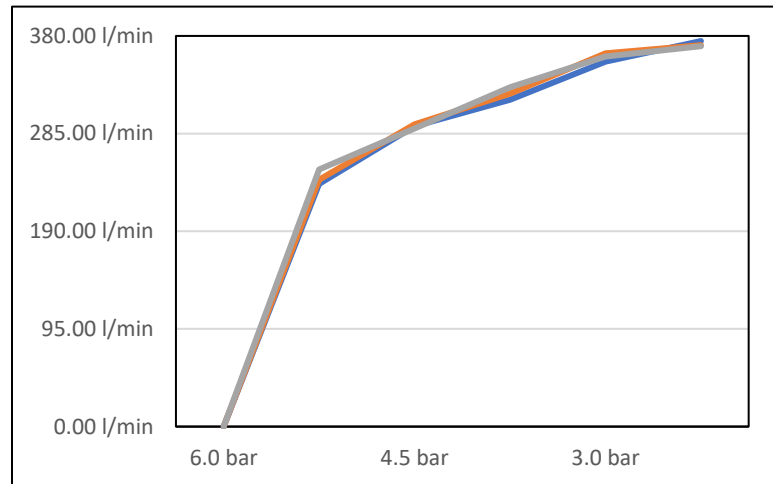
- Inlet pressure: 1 bar
- Outlet pressure: 0.8 bar



Date: October 2019
 Provided by: Third Party

Flow Capacity

- Inlet pressure: 7 bar
- Outlet pressure: 6 bar



Date: October 2019
 Provided by: Third Party

Output Sensitivity

- Inlet pressure: 1 bar
- Outlet flow: 0

Lowest adjustable static pressure

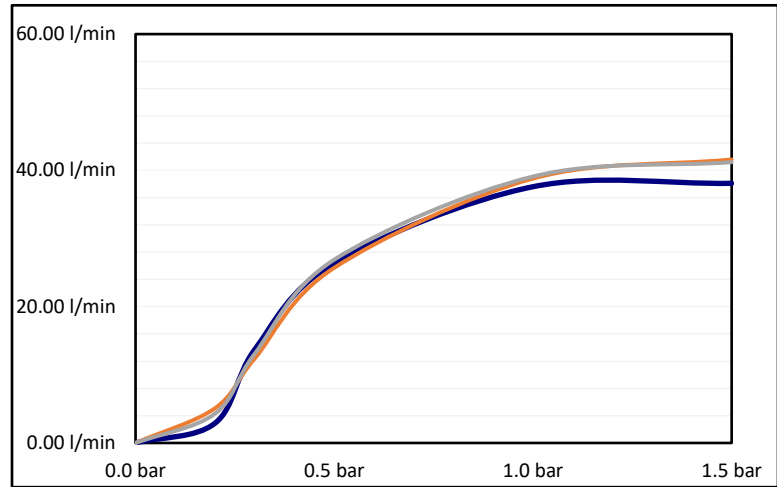
1	50 mbar
2	50 mbar
3	50 mbar

Date: October 2019
 Provided by: Third Party

Exhaust capacity and sensitivity

- Inlet pressure: 7 bar
- Outlet pressure: 50% of the control range

Date: October 2019
Provided by: Third Party



Exhaust Onset

- Outlet pressure setting: 1 bar

Date: October 2019
Provided by: Third Party

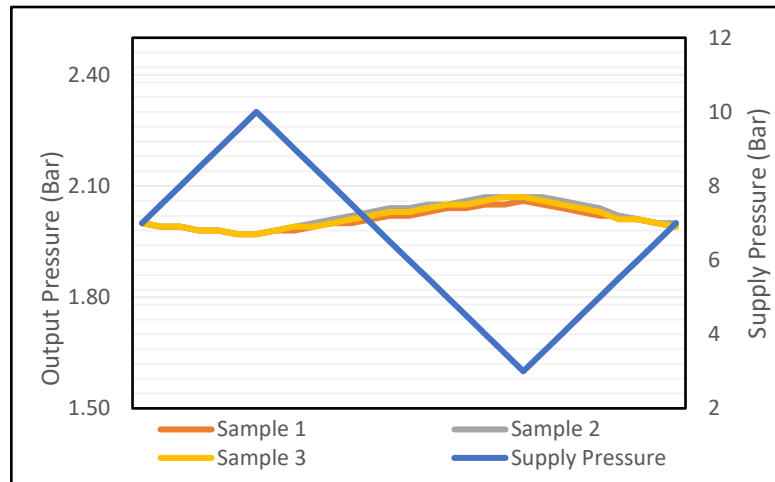
Excessive outlet pressure

1	160 mbar
2	170 mbar
3	150 mbar

Supply Pressure Variation

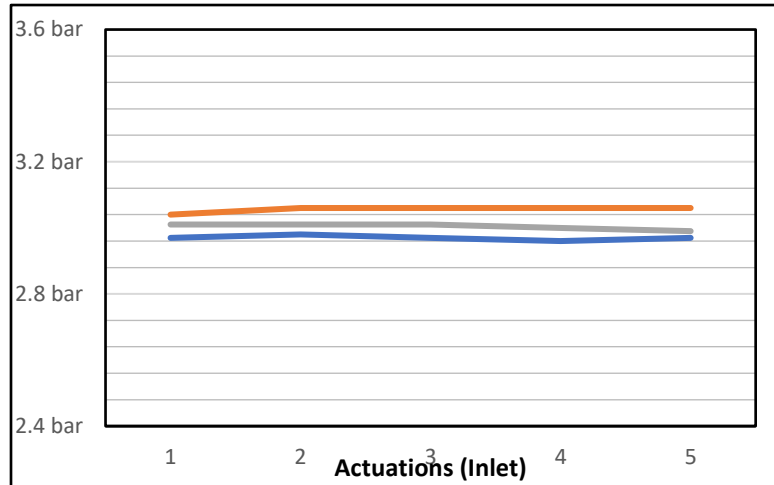
- Flow rate: 20 NI/min
- Output pressure setpoint: 2 bar

Date: October 2019
Provided by: Third Party



Repeatability Input Actuations

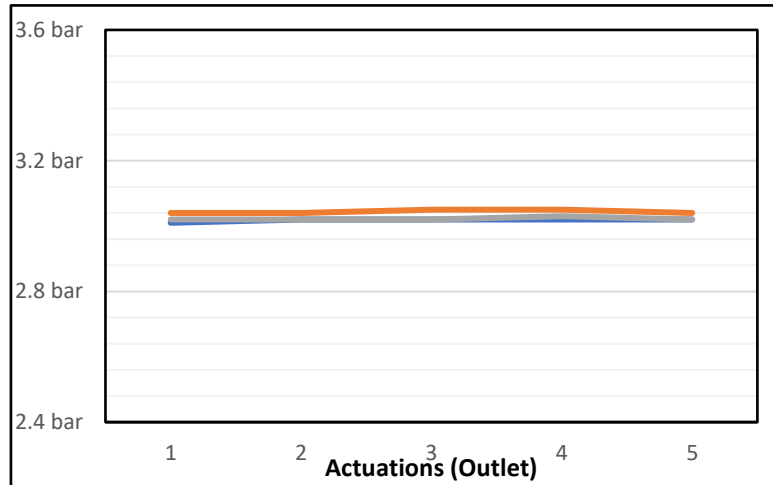
- Switch of pressure: P max or 50%
- Outlet pressure: 50%



Date: October 2019
Provided by: Third Party

Repeatability Output Actuations

- Switch off outlet pressure: P max or 50%
- Outlet pressure: 50%



Date: October 2019
Provided by: Third Party

Air Consumption

- Inlet: 7 bar

	1	2	3
	l/min	l/min	l/min
2 bar	0.0	0.0	0.0
4 bar	0.0	0.0	0.0

*0.0 are recorded values

Date: October 2019
Provided by: Third Party