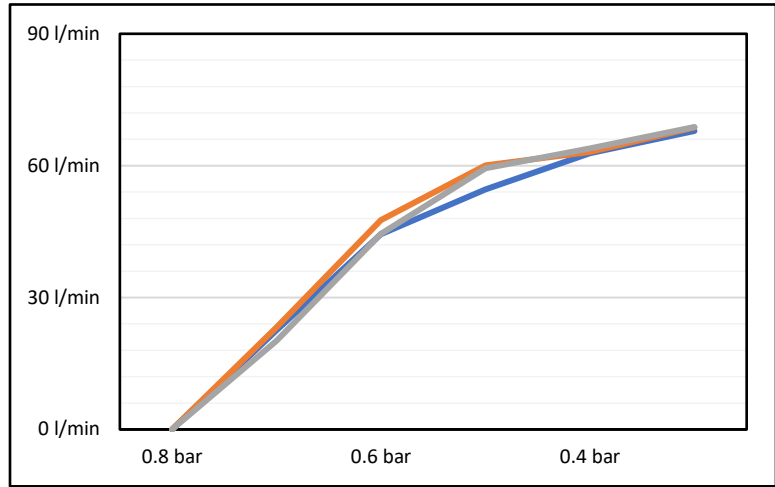


### Flow Capacity

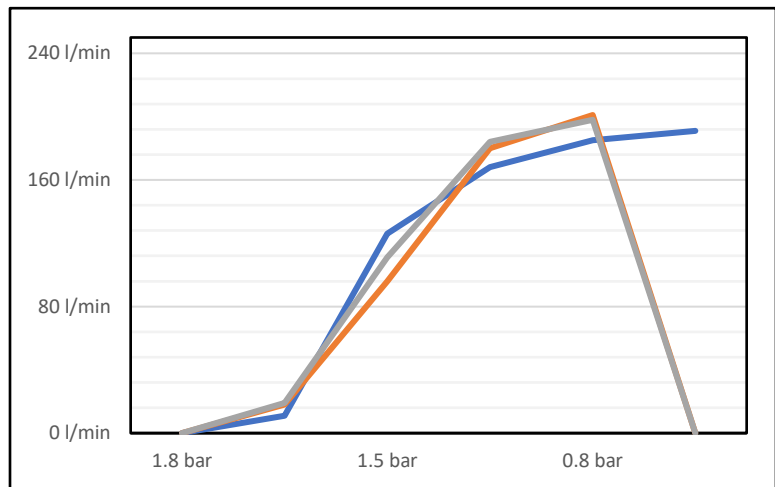
- Inlet pressure: 1 bar
- Outlet pressure: 0.8 bar



Date: October 2019  
 Provided by: Third Party

### Flow Capacity

- Inlet pressure: 7 bar
- Outlet pressure: 1.8 bar



Date: October 2019  
 Provided by: Third Party

### Output Sensitivity

- Inlet pressure: 1 bar
- Outlet flow: 0

Lowest adjustable static pressure

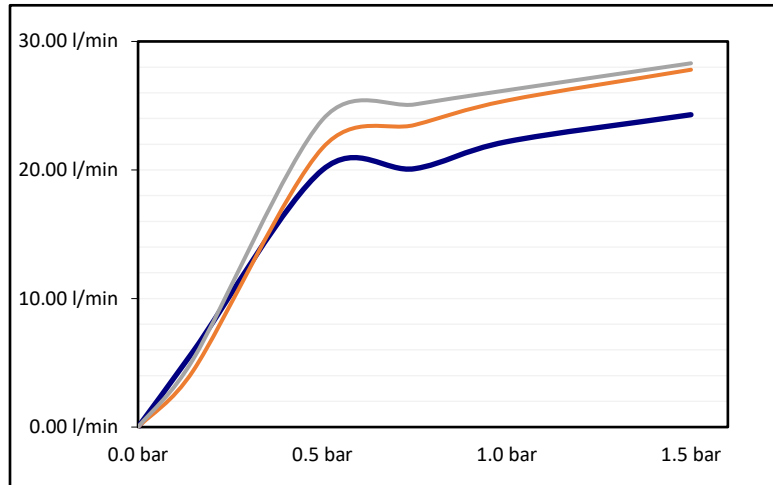
|          |         |
|----------|---------|
| <b>1</b> | 30 mbar |
| <b>2</b> | 30 mbar |
| <b>3</b> | 30 mbar |

Date: October 2019  
 Provided by: Third Party

### Exhaust capacity and sensitivity

- Inlet pressure: 1 bar
- Outlet pressure: 50% of the control range

Date: October 2019  
Provided by: Third party



### Exhaust Onset

- Outlet pressure settings: 1 bar

Excessive outlet pressure

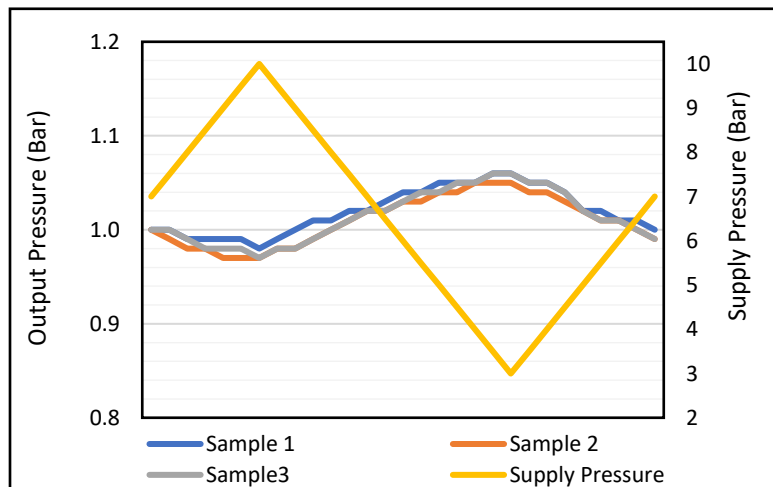
|          |          |
|----------|----------|
| <b>1</b> | 130 mbar |
| <b>2</b> | 120 mbar |
| <b>3</b> | 100 mbar |

Date: October 2019  
Provided by: Third Party

### Supply Pressure Variation

- Flow rate: 20 NI/min
- Output pressure: 1 bar

Date: October 2019  
Provided by: Third Party

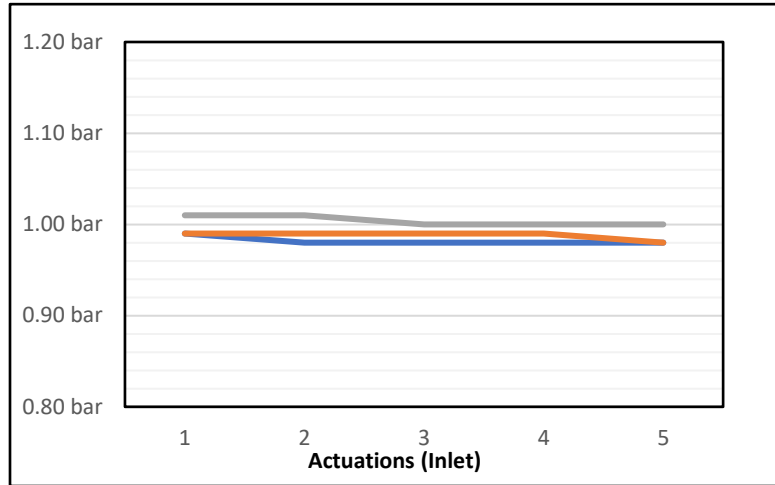


### Repeatability Input Actuations

Switch of pressure:

- Inlet pressure: P max or 50%
- Outlet pressure: 50%

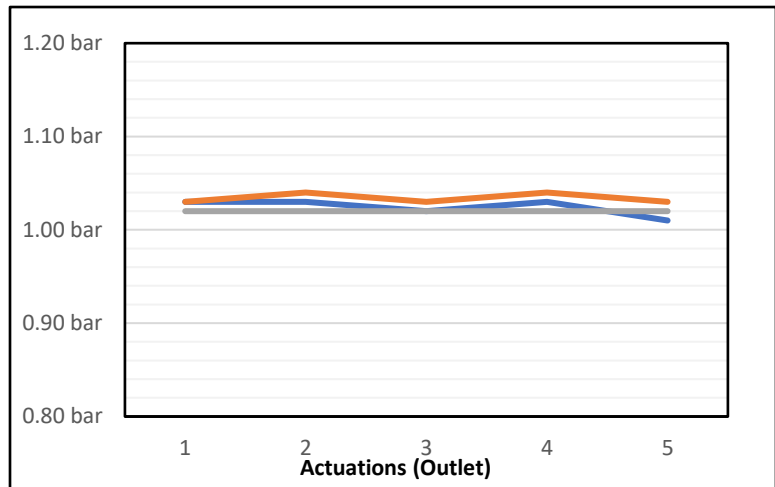
Date: October 2019  
Provided by: Third Party



### Repeatability Output Actuations

- Switch of pressure: P max or 50%
- Outlet pressure: 50%

Date: October 2019  
Provided by: Third Party



### Air Consumption

- Inlet: 7 bar

|         | 1     | 2     | 3     |
|---------|-------|-------|-------|
|         | l/min | l/min | l/min |
| 0.5 bar | 0.0   | 0.0   | 0.0   |
| 1 bar   | 0.0   | 0.0   | 0.0   |

\*0.0 are recorded valves

Date: October 2019  
Provided by: Third Party